



# MAMED Newsletter



## DISSEMINATION OF THE MAMED TRAINING CONCEPT REVALORISATION OF MEDICAL DEVICES

### *EDITORIAL*

*This is the first Newsletter edited by the MAMED Network under the COMMAMED Project. Its goal is to facilitate the communication among the members of the TRAMA network and their partners, in order to consolidate the MAMED concept and good practices.*

*This Newsletter is meant to keep you and your partners posted about the activities of the MAMED network members and about the goals and opportunities of the COMMAMED Project.*

*Feel free to contribute to this Newsletter !*

*Contact : [g.comanescu@motivation.ro](mailto:g.comanescu@motivation.ro)*

### *NEWS*

*2009 brings the opportunity for MAMED network to enlarge itself to new horizons : this year the network increased from to 13 countries partners, connecting 20 organizations.*

*In order to strengthen its organization and develop its activities, the MAMED network also prepared this year 4 new transnational projects which have been submitted to the European Union: CERTIMAMED, MAMED INTERNATIONAL; TRAMA 2 and MAMED LOCAL. Final approvals are expected during the 2<sup>nd</sup> semester 2009. We will let you informed through the following MAMED Newsletters!*

*MAMED network is also implementing two on-going projects which would be completed at the end of this year:*

*The TRAMA project:*

*12 European countries are taking part into this project that aims to transfer, implement and certify locally the MAMED training session*

*The COMMAMED project:*

*This project aims to strengthen MAMED network through developing common communication and dissemination tools and methods*

*MAMED Network members will all meet in Paris next 29th and 30th of June!*

## PICTURE OF THE MONTH:

TRAMA Project Partnership Meeting in Rumania





## Background on MAMED: a brief history of the network

*MAMED is an international network dedicated to socially inserting vulnerable people like people with disabilities and long term unemployed persons. It is organised at two levels: transnational and local levels. It was created in 2002 by 6 organisations from 4 countries and it was afterwards expanded to other 9 partners in other 8 European countries.*

*The MAMED network's mission is to promote synergetic cooperation between its members in order to further realize their common goal: socially and professionally integrating underprivileged people by creating new avenues through which they can serve elderly or disabled individuals in need of medical devices. Moreover, the network of workshops must allow the development of a common strategy and consistent quality, service and pricing policies. The network members also operate also on the international stage.*



## Let's meet with MAMED partners

### At the beginning of the MAMED network: the founder members

**Handicap et Libertés**  
[www.hal.asso.fr](http://www.hal.asso.fr)

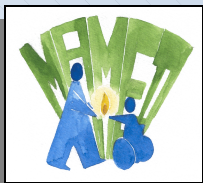
**(France)**

*Created in 1985, HAL is a French non profit-making association which helps the integration of disabled people and struggles against any form of discrimination. It carries out activities around the area of humanitarian aid, international development support, public awareness and integration of excluded ones on the local level. HAL is the designer and the promoter of the MAMED concept which was born from a similar project of sustainable development and which aims at the settlement of manufacturing and repairing workshops for medical equipment in South American countries. These workshops train and employ people with difficulties of integration.*

**AURELIE**  
[www.resasbl.bl](http://www.resasbl.bl)

**(Belgium)**

*AURELIE (Urban Workshops for Reinsertion in the labour market in Liège) is a Belgian association present in the field of vocational training and integration in the labour market of adults excluded from the labour market because of a handicap. Aurelie trains around forty interns in the fields of automobile, building trades and recycling. Its activities, related to mechanics and recycling through promotion of employment of disabled people, are fully corresponding to MAMED project for training of excluded people and creation of employment in the field of repair of medical devices.*



## **Consorzio Sociale Abele Lavoro (Italy)**

[www.gruppoabele.org](http://www.gruppoabele.org)

*The organization was created in 1998. It develops a branch of activity and the creation of several projects for personal guidance, social integration and employment of disadvantaged people. These projects are conducted with a network of different territorial services. Are provided: reception, guidance information and training, skills evaluation, support for integration in the labor market, internships, tutoring, counseling on laws related to the companies' activities. The target group is mainly disadvantaged people, victims of violence, invalid people, long-term unemployed people.*

## **Federacion ECOM (Spain)**

[www.ecom.es](http://www.ecom.es)

*Since 1972, the spanish federation named ECOM has combined its forces with those of its 125 members in order to gain the whole and full integration in every social and professional field of the people suffering from a physical handicap. With concrete results at stake, ECOM focuses its actions onto the most behind fields in terms of integration for disabled persons, it also implements programs, coordinates awareness-raising actions and campaigns. Its activities deal above all with accessibility, education, health and professional integration.*

## **ESCLATEC (Spain)**

[www.esclatec.com](http://www.esclatec.com)

*ESCLATEC is an integration-enterprising association which is active in the training and employment of physically disabled people within the electronic area. The association also works on technical tools whose aim is to favour the professional integration of persons suffering from a physical handicap. ESCLATEC is a member of the ECOM Federation.*

## **GRETA-GITA (France)**

[www.gita.greta.fr](http://www.gita.greta.fr)

*GRETA is a French grouping of public establishments which unites their resources, their teachers and equipments. A GRETA takes in and guides the public, helps the definition of projects and training paths as well as with professional projects, it also defines trainings, achieves skills assessments. It allows the public to benefit from a positioning before any admission to a training, to acquire professional skills, to be back on level and to prepare a diploma certificate, to learn foreign languages, to benefit from a support within the frame of an accreditation for work experience, to prepare a competitive examination for the entrance to any administration or collectivity, to train oneself to the technologies of information and communication, to be supported during the return to work.*

## **TERRE (Belgium)**

[www.terre.be](http://www.terre.be)

*This Non Profit-Making Association is part of the group also called TERRE composed of active social economy firms and associations from the North and the South. Since each entity belongs to the Group, TERRE strives towards a sole goal : restoring man's dignity through employment and favouring his social and economic reintegration. This social goal is carried on with the gathering, sorting and resale of clothes. TERRE is also involved in a Wallonie project dealing with salvage and reuse of clothes, salvage and recycling of old papers, manufacture of soundproofed panels, placing of soundproofed panels and works of mechanics and soldering. renting of "cuistax".*



## The TRAMA Project : MAMED network's enlargement

**from 4 to 12 countries  
from 7 to 15 organizations**

With the support of MAMED founder members within the frame of a LEONARDO Transfer of Innovation Project, the following organizations are currently implementing locally a MAMED training session and identifying local partnership to develop MAMED activities around the recycling of medical equipments.

### **SOPA**

**(Lithuania)**

[www.sopa.lt](http://www.sopa.lt)

*SOPA is a public non profit-making institution which was created in 2006 in Vilnius. It aims at supplying professional guidance services and at increasing each and everyone's possibilities to be truly fulfilled through one's career SOPA determines the most appropriate solutions for everyone by comparing the employers' needs with the employees' skills ; it guarantees socially excluded persons with even opportunities for employment as well as in the society. The organisation is specialised in the fields of research and staff selection, as well as in the elaboration and management of social projects.*

### **ARCIL**

**(Portugal)**

[www.arcil.org](http://www.arcil.org)

*Since 1976, ARCIL, a non profit organization in the center of Portugal, develops different projects for disabled persons and other vulnerable groups. Its mission is to promote care and rehabilitation services to persons with disabilities or in a situation of exclusion, aiming their social and professional integration. Activities are based on an ecological and social model of intervention, with the emphasis on the active establishment of partnerships with local and regional organizations. Its action is oriented by some simple principles – integration, respect, quality, individualization, labour and sustainability, through the development of several activities of Rehabilitation Services and Production .*

### **Bildungswerk des Alzeierund Wormser Handwerks**

**(Germany)** <http://www.bildungswerk-handwerk.de>

*The Educational Institute of Handicraft Alzey and Worms is an educational institution situated in the West of Germany. It is conducting different measures in several locations that are funded by different public authorities. Measures in professional welfare activities and welfare activities for youth are part of the original fields of activities of the organization. It is supported by a network and a close relationship to: regional handicraft associations and their associated enterprises, vocational schools, public authorities such as the employment agency, social welfare office, the youth welfare office.*

### **Motivation Romania Foundation**

**(Romania)**

[www.motivation.ro](http://www.motivation.ro)

*Motivation Romania Foundation (MRF) is an important associative structure located in the region of Bucharest. Its mission consists in the reintegration, training and employment of physically-disabled persons. Its activities deal with several fields and in particular: developing a full system of intervention with the persons showing spine damages following an accident (training, transport, accomodation, etc..) ; training, aid to accessibility and service to disabled people; handisport activities; lobbying in favour of development of services dedicated to disabled children.*



## **Kahramanmaras Egetim Merkezi**

**(Turkey)**

[www.ahiturk.com/en/default.asp](http://www.ahiturk.com/en/default.asp)

*Kahramanmaras Vocational Education and Training Center is a non-profit governmental organization bound to Ministry of National Education, Turkey. It provides education for apprentices, headworkers and craftsmen. It counts almost 1100 trainees in 139 branches with 73 trainers. Completed and ongoing courses, educational units have been established within 25 enterprises which employ more than 250, and periodically on-the-job-training and adaptation courses are held. The institution is located in an industrial site, surrounded by big enterprises with which contact is established for information, technology and transfer of service.*

## **Technical University of Kosice**

**(Slovakia)**

[www.tuke.sk](http://www.tuke.sk)

*The Technical University of Košice was founded in 1952. It has nine faculties, around 12 000 full-time undergraduates and 700 post-graduate students, almost 900 teachers, and the same number of research and administrative staff. University works in close co-operation with other universities and with industrial organizations throughout the region and the country. The Department of Biomedical Engineering, Automation and Measurement is the partner of the TRAMA project. It develops Engineering study in cooperation with different companies dealing with medical equipment, and hospitals especially Rehabilitation departments. An Access Center permits to coordinate support of students with disabilities, ensuring equal access to educational opportunities in the Technical University of Košice.*

## **HRDC**

**(Greece)**

[www.hrdc.org.gr](http://www.hrdc.org.gr)

*HRDC is a non governmental organization connected with a network composed by regional development centers aiming to support and strengthen individual and local organizations' cooperation, universities, companies in the field of education and professional training. The organizations's strategic objectives are the regional development, initial and life long learning, to promote socioeconomic cohesion and to increase greek standards of living, to address vulnerable people's needs around economic insertion, training opportunities. The main activities of HRDC in Patras are based on vocational training sessions, counselling, professional needs assessment, development of training and pedagogical materials for specific groups, e-learning.*

## **LFOON-SW**

**(Poland)**

[www.lfoon.lublin.pl](http://www.lfoon.lublin.pl)

*Lublin Forum of Prganization supporting Disabled People LFOON, created in 1994 is a grouping of 49 disabled people support organizations. The main goals are to promote activity, employment, and socioenonic insertion of people with disabilities, to design and implement projects in the fields of computing, couselling, training and educationnal support, rehabilitation and local employment opportunities for disabled people. The organization LFOON coordinates the activities of the Regional Couselling and Information Center for People with disabilities (WSIDON), the Professional promotion Office, and Employment and Suport Agency.*

## The COMMAMED Project : MAMED network's visibility



**from 12 to 13 countries  
from 15 to 20 organizations**

During this year, all MAMED network members are invited to meet up in Paris on the 29<sup>th</sup> and 30<sup>th</sup> of June 2009. Meanwhile, the newest organizations who recently integrated the MAMED network are preparing a local MAMED conference, designed to inform and spread informations about MAMED concept, field of activities and partners organizations

### **Cyberall-Access**

[www.cyberall-access.com](http://www.cyberall-access.com)

**(Cyprus)**

*Based in Limassol, Cyprus, we are a passionate team of creative thinkers committed to growing our operations. We have been sharing our vision as trainers, dissemination experts, designers, developers, marketers, psychologists, IT and User Experience specialists to support the company's values and fulfil its potential. CYBERALL-Access's close proximity to many of the country's top hospitals and education institutions helps foster close research, teaching and testing relationships with several of these facilities. CYBERALL-ACCESS aims to become a leading expert in its areas of expertise that highlight a unique combination of skills in: training, ICT, Assistive technologies, accessibility and usability services, Disability policies, Quantitative and qualitative research methods, Event management*

### **Πανεπιστήμιο Κύπρου – University of Cyprus**

[www.cs.ucy.ac.cy](http://www.cs.ucy.ac.cy)

**(Cyprus)**

*The Department of Computer Science is one of the most active Departments of the University of Cyprus: it has 19 regular staff, postgraduate and research students and Research Associates. The Department is very active in the areas of information technology and communications. Its research falls under the following areas: artificial neural networks and genetic algorithms, computational logic, multimedia information systems, electronic commerce, Internet computing, parallel and distributed algorithms, signal and image processing, software engineering, multi-language multi-computers compilers, networking, and object-oriented databases and programming. The Department is particularly active in the practical applications of ICT, in areas such as e- and m-learning, e- and m-health, e-government, e-business and other areas related directly to vocational training and lifelong learning.*

### **E-Isotis**

[www.e-isotis.org](http://www.e-isotis.org)

**(Greece)**

*e-ISOTIS is a non profit organisation based in Greece and with representation office also in Brussels that advances the lifelong learning good practices and implements also innovative training, either blended, based on e-learning or via group learning techniques. We are supported by experts in various fields like physicians, psychologists, teachers, research experts, computer scientists, economists, PR, lawyers and other specialists. We have our own training facilities and co-operate with a significant number of training centers, universities, public authorities like municipalities and agencies, certification and accreditation bodies at national and European level, SMEs and media. The organization has been implementing successfully more than 10 European Projects that deal with vocational training, adult education, higher education.*



## **ICA Formacion**

**(Spain)**

[www.icaformacion.com](http://www.icaformacion.com)

*The training Center ICA was created in 1996 by education experts with the aim to address didactic needs and promote human resources competitiveness among all kind of companies, professional organizations, third sector units and public administration. The training programmes implemented by the organization ICA are designed to address the requirements of both professional sector and individuals, by using adapted educational models and training standards.*

## **Yenimahalle İlçe Milli Eğitim Müdürlüğü**

**(Turkey)**

[www.yenimahalle.meb.gov.tr](http://www.yenimahalle.meb.gov.tr)

*Yenimahalle Directorate of National Education, in Ankara,, is a governmental organization in charge with the planning and coordination of all kinds of educational and training activities in from pre-school to the end of secondary school, vocational high schools, technical schools. We have Vocational Guiding Department, Guiding Research and Development (DNR) for teachers, students and parents, Non-Formal Public Education Center, Vocational training Center, Apprenticeship and Vocational Technical Education which support adult training with non-formal courses to create a better social cohesion and opportunities for employability for beneficiaries. We count with 133 institutions, 7540 teachers/trainers and 104.500 students/learners.*